



WIPE OUT STICKY ELEMENTS ONCE
AND FOR ALL WITH

ICP TRUE RINSE



Are you tired of struggling with sticky elements, and finding it difficult to clean your ICP between samples? The rinse method you're using could be causing memory effects, leaving you scratching your head and second guessing your results when elements like mercury, gold, boron, silicon and osmium continue to stick around.

We've got the perfect solution to mitigate your struggles — **scan to learn more and claim your free 125mL sample for a limited time!**



[CLICK FOR
MORE INFO](#)

The days of letting sticky elements hang around are over.

PRODUCT NAME	PRODUCT DESCRIPTION
ICP-TRUE-RINSE-1L	HCl and Thiourea washout solution for ICP

How ICP-TRUE-RINSE Helps with Washout



- **Tackles the Stickiest Elements** — This ICP washout solution is the result of years of rigorous testing and certification of Certified Reference Materials. It's tailored to tackle even the stickiest elements, such as Hg, Au, B and Os, ensuring precision in your testing.



- **Works Fast, Saving Time and Hassle** — ICP-TRUE-RINSE ensures a rapid, efficient, and consistent clean between samples, saving you time and hassle. It will reduce your volume and wash time between samples as well as your number of sample blanks.



- **Ready to Use** — ICP-TRUE-RINSE is made with the highest-purity starting materials and comes ready to use with all associated documentation.



- **Ensures Good Laboratory Practice** — Most laboratories use HCl or HNO₃ rinses. ICP-TRUE-RINSE takes your wash procedure a step further by introducing Thiourea to mobilize sticky elements.



- **Guaranteed 5-Year Shelf Life with TCT** — Transpiration Control Technology (TCT) guarantees shelf life of the product for up to five years from the date of manufacture.



- **Currently Available in 1L Volume** — ICP-TRUE-RINSE is competitively priced at \$110 for 1L. Claim a 125mL sample risk free!



Refine your results. Redefine your industry.

Learn about the benefits from customers who are using ICP-TRUE-RINSE



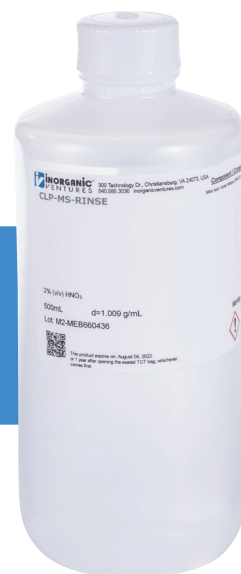
I love the wash solution. I will admit I was skeptical at first, but it really does make a difference! I was able to significantly reduce both my volume and time for washes in between samples. One thing that I like that I wasn't really expecting is that the solution doesn't seem to slowly pick up background metals like my HCl rinse would. I would often have to replace the HCl wash solution before I've gone through all 250mL volume because it slowly builds up a background. Not only did this wash solution not do that, it also continued to work really well after I topped it off with DI water halfway through the bottle.

I was washing for 30sec with HCl at a pump speed of 0.5 rpm before. With your solution I can wash for 10sec and my normal 0.1rpm pump speed and still get a good cleaning between samples. This was most noticeable with my method blank. My normal process is to run 3 blank samples after the highest standard, then the method blank before the samples. I was able to reduce that to just 1 blank sample and have basically eliminated the Hg carryover I was trying to avoid with those extra blanks.



– Michelle Speer, Lab Director, Co-Founder
Gateway Labs

Looking for a distinct standard or rinse?
Give us a call. Customs are our specialty.



 **INORGANIC**TM
VENTURES
Refine your results. Redefine your industry.