

## 1.0 ACCREDITATION / REGISTRATION

**INORGANIC VENTURES** is accredited to ISO Guide 34, "General Requirements for the Competence of Reference Material Producers" and ISO/IEC 17025, "General Requirements for the Competence of Testing and Calibration Laboratories". Inorganic Ventures is also an ISO 9001 registered manufacturer (SAI Global File Number 010105).



## 2.0 PRODUCT DESCRIPTION

Product Code: Single Analyte Ion Chromatography Solution  
Catalog Number: ICDCA-S  
Lot Number: J2-OI03088  
Matrix: H2O  
Value / Analyte(s): 500 µg/mL ea:  
Dichloroacetate  
Starting Material: Dichloroacetic Acid  
Starting Material Lot#: 04925AA  
Starting Material Purity: 99.8300%

## 3.0 CERTIFIED VALUES AND UNCERTAINTIES

**Certified Value:** 500 ± 3 µg/mL  
**Certified Density:** 0.999 g/mL (measured at 20 ± 1 °C)

### Assay Information:

<b>Assay Method #1</b>	<b>500 ± 2 µg/mL</b> Calculated NIST SRM 84k Lot Number: 84k
<b>Assay Method #2</b>	<b>503 ± 1 µg/mL</b> IC Assay NIST SRM traceable to 84K Lot Number: traceable to 84K

- The Calculated Value is a value calculated from the weight of a starting material that has been certified directly vs. a National Institute of Standards and Technology (NIST) SRM/RM. See Sec 4.2 for balance traceability.

The following equations are used in the calculation of the certified value and the uncertainty. Reported uncertainties represent expanded uncertainties expressed at approximately the 95% confidence level using a coverage factor of k = 2.

**Characterization of CRM/RM by Two Methods**

Certified Value,  $X_{CRM/RM}$ , where two methods of characterization are used is the weighted mean of the two results:

$$X_{CRM/RM} = [(w_a)(X_a) + (w_b)(X_b)]$$

$X_a$  = mean of Assay Method A with standard uncertainty  $u_{char a}$

$X_b$  = mean of Assay Method B with standard uncertainty  $u_{char b}$

$w_a$  and  $w_b$  = the weighting factors for each method calculated using the inverse square of the variance:

$$w_a = (1/u_{char a})^2 / ((1/u_{char a})^2 + (1/u_{char b})^2)$$

$$w_b = (1/u_{char b})^2 / ((1/u_{char a})^2 + (1/u_{char b})^2)$$

$$CRM/RM \text{ Expanded Uncertainty } (\pm) = U_{CRM/RM} = k (u_{char a\&b}^2 + u_{bb}^2 + u_{lts}^2 + u_{sts}^2)^{1/2}$$

k = coverage factor = 2 in all cases at Inorganic Ventures

$u_{char a\&b} = [(w_a)^2 (u_{char a})^2 + (w_b)^2 (u_{char b})^2]^{1/2}$  where  $u_{char a}$  and  $u_{char b}$  are the square root of the sum of the squares of errors from characterization which include instrument measurement, density, NIST SRM uncertainty, weighing, and volume

$u_{bb}$  = bottle to bottle homogeneity standard uncertainty

$u_{lts}$  = long term stability standard uncertainty (storage)

$u_{sts}$  = short term stability standard uncertainty (transportation)

**4.0 TRACEABILITY TO NIST**

- This product is traceable to NIST via an unbroken chain of comparisons. The uncertainties for each certified value are reported, taking into account the SRM/RM uncertainty error and the measurement, weighing and volume dilution errors. In rare cases where no NIST SRM/RM are available, the term 'in-house std.' is specified.

**4.1 Thermometer Calibration**

- All thermometers are NIST traceable through thermometers that are calibrated by an accredited calibration laboratory.

**4.2 Balance Calibration**

- All analytical balances are calibrated by an accredited calibration laboratory and procedure. The weights used for testing are annually compared to master weights and are traceable to NIST.

**4.3 Glassware Calibration**

- An in-house procedure is used to calibrate all Class A glassware used in the manufacturing and quality control of CRM/RMs.

**5.0 CHROMATOGRAM**

**Characterization of CRM/RM by One Method**

Certified Value,  $X_{CRM/RM}$ , where one method of characterization is used is the mean of individual results:

$$X_{CRM/RM} = \text{mean of Assay Method A with standard uncertainty } u_{char a}$$

$$CRM/RM \text{ Expanded Uncertainty } (\pm) = U_{CRM/RM} = k (u_{char a}^2 + u_{bb}^2 + u_{lts}^2 + u_{sts}^2)^{1/2}$$

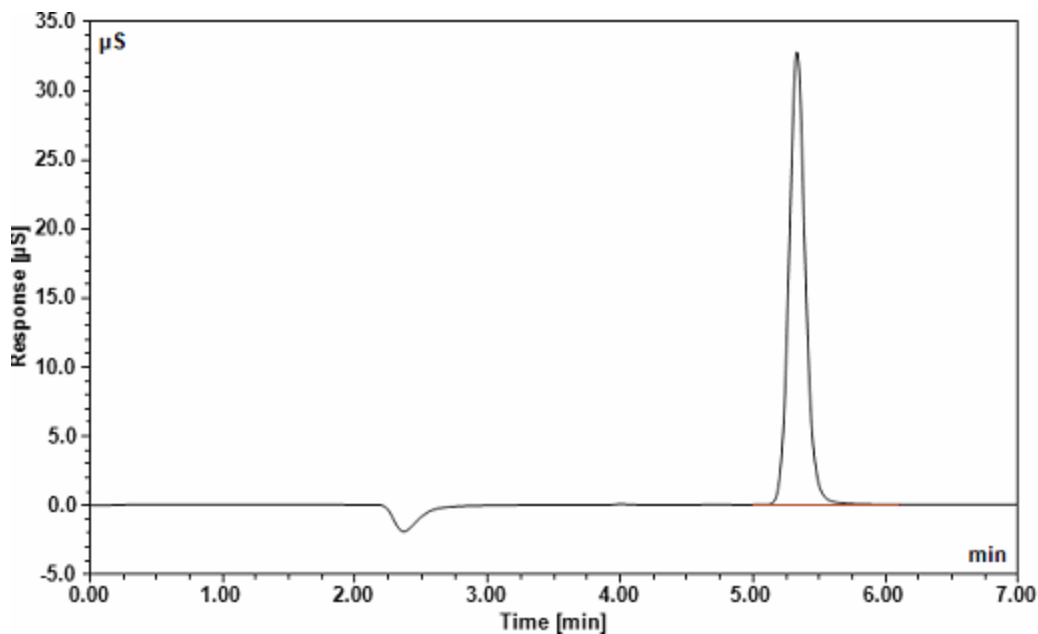
k = coverage factor = 2 in all cases at Inorganic Ventures

$u_{char a}$  = square root of the sum of the squares of the errors from characterization which include instrumental measurement, density, NIST SRM uncertainty, weighing, and volume

$u_{bb}$  = bottle to bottle homogeneity standard uncertainty

$u_{lts}$  = long term stability standard uncertainty (storage)

$u_{sts}$  = short term stability standard uncertainty (transportation)



#### Dionex ICS-1000 Ion Chromatograph

<b>Analytical Column:</b>	IonPac AS22 4 x 250 mm	<b>Eluent:</b>	4.5 / 1.4 mM Na <sub>2</sub> CO <sub>3</sub> / NaHCO <sub>3</sub>
<b>Guard Column:</b>	IonPac AG22 4 x 50 mm	<b>Eluent Flow Rate:</b>	1.2 mL/min
<b>Anion Self-Regenerating Suppressor:</b>	AERS 500 4 mm	<b>Column Temp:</b>	N/A
<b>Cation Self-Regenerating Suppressor:</b>	N/A	<b>Cell Temp:</b>	35 °C
<b>Suppressor Current:</b>	31 mA	<b>Scale X-Axis:</b>	35 µS
		<b>Scale Y-Axis:</b>	minutes
		<b>Concentration:</b>	50 µg/g

#### 6.0 INTENDED USE

- For the calibration of analytical instruments and validation of analytical methods as appropriate.

#### 7.0 INSTRUCTIONS FOR THE CORRECT USE OF THIS REFERENCE MATERIAL

##### 7.1 Storage and Handling Recommendations

- Keep cap tightly sealed when not in use. Store and use at 20 ± 4° C. Do not pipette from the container. Do not return removed aliquots to container.

#### 8.0 HAZARDOUS INFORMATION

- Please refer to the Safety Data Sheet for information regarding this CRM/RM.

#### 9.0 HOMOGENEITY

- This solution was mixed according to an in-house procedure and is guaranteed to be homogeneous. Homogeneity data indicate that the end user should take a minimum sample size of 0.2 mL to assure homogeneity.

**10.0 QUALITY STANDARD DOCUMENTATION**

**10.1 10CFR50 Appendix B - Nuclear Regulatory Commission**

- Domestic Licensing of Production and Utilization Facilities

**10.2 10CFR21 - Nuclear Regulatory Commission**

- Reporting defects and Non-Compliance

**10.3 ISO 9001 Quality Management System Registration**

- SAI Global File Number 010105

**10.4 ISO/IEC Guide 17025 "General Requirements for the Competence of Testing and Calibration Laboratories"**

- Chemical Testing - Accredited / A2LA Certificate Number 883.01

**10.5 ISO/IEC Guide 34 "General Requirements for the Competence of Reference Material Producers"**

- Reference Material Producer - Accredited / A2LA Certificate Number 883.02

**11.0 CERTIFICATION, EXPIRATION AND PERIOD OF VALIDITY**

**11.1 Certification Issue Date**

November 19, 2015

**11.2 Expiration Date**

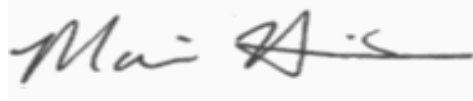
**11.3 Period of Validity**

- The certification is valid within the measurement uncertainty specified provided the CRM/RM is handled and stored in accordance with instructions given in Sec 7.0 and used prior to the date given in Sec 11.2. This certification is nullified if the CRM/RM is damaged, contaminated, or otherwise modified.

**12.0 NAMES AND SIGNATURES OF CERTIFYING OFFICERS**

**Certificate Prepared By:**

Maurice Harris  
Product Documentation Technician



**Certificate Approved By:**

Michael Booth  
QC Supervisor



**Certifying Officer:**

Paul Gaines  
PhD., Senior Technical Director

